

Procedure 9: Obtain Your License Key

This procedure describes how to obtain the license key file for your Spirent TestCenter chassis. This is done via the Spirent Communications Customer Service Center website. Once you have obtained your license key file, you need to install the file on your Spirent TestCenter chassis controller (unless you specifically requested in your order that it be included in your shipment). This is done by using the Spirent TestCenter Administration application.



To obtain your license key file:

- 1 Locate the License Authorization Code (LAC) that applies to your order. The LAC appears on the *License Authorization Code Certificate* that is shipped with the Spirent TestCenter software (printed on blue paper). The LAC will also be emailed to you if your email address was included on your purchase order.
The LAC is grouped into three fields, such as: 18791-170CBC219-1258. Each field can be all digits, all letters, or alphanumeric. The total LAC can be up to 25 digits/characters long.
- 2 Go to Spirent's Customer Service Center website at <http://support.spirentcom.com>.
- 3 In the *My CSC Tools* pane of the main window, click on the **Spirent Licence Fulfillment** link to begin the process of generating and obtaining the license key. The *START* window appears (*Figure 2-17*).

Figure 2-17. Start Window

- 4 Enter your LAC in the field located at the bottom of the page. Be sure to include hyphens between the three groups of digits/characters. This field is case-sensitive. Click **Submit**. The *STEP 1 (HOME)* window appears (*Figure 2-18 on page 52*).



Figure 2-18. STEP 1 (HOME) Window

- 5 The *STEP 1 (HOME)* window provides you with two options: to generate a license or to view existing licenses. In this example, it is assumed that you are creating a license, so click **Generate License**. The *STEP 2* window now appears (*Figure 2-19 on page 53*).

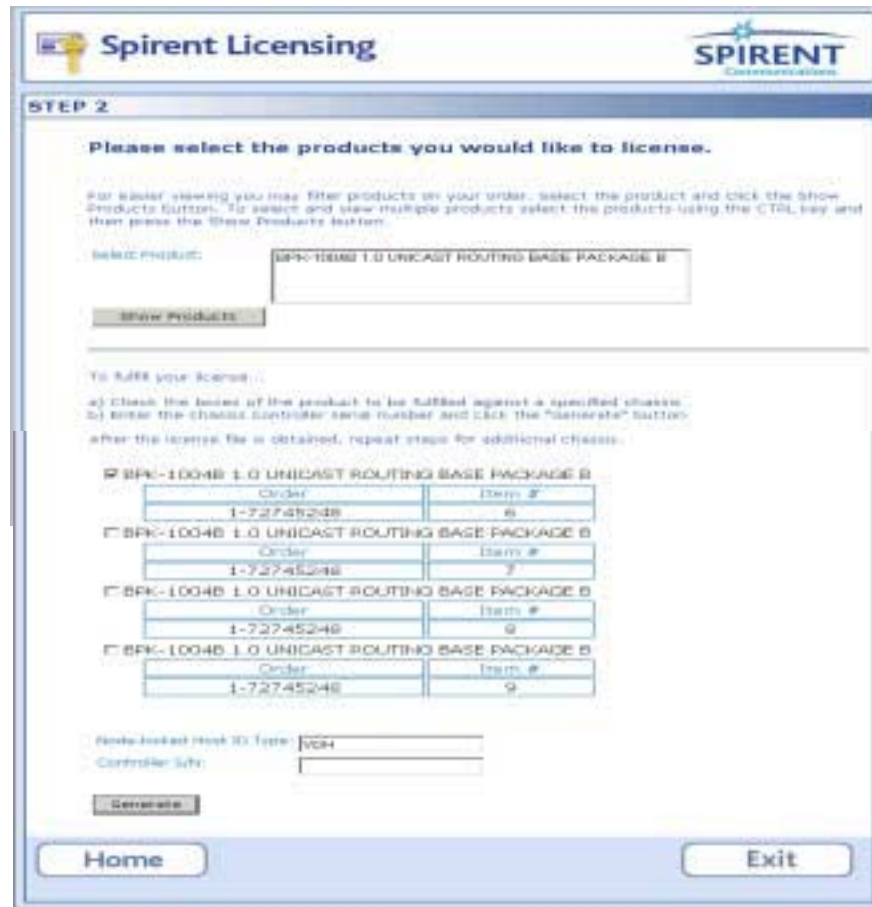


Figure 2-19. STEP 2 Window

- 6 In the *STEP 2* window, click the **Show Products** button to display a list of the products that are available for licensing under your LAC. Check the boxes of the software items that you want to include in the license key file for a specific chassis controller.



Note: If you ordered a Support Agreement, it must also be checked for inclusion in the license file for the specific chassis.

- 7 In the *Controller S/N* field, enter the chassis controller serial number for which you are generating the license. The serial number can be obtained from either:
 - The label located on the chassis controller (located on the back of the chassis), that contains the text "Use this serial number for software licensing" ...or...
 - The Spirent TestCenter Administration application, which allows you to view the serial number remotely.
- 8 Click **Generate** to open the *STEP 3* window, which allows you to confirm the parameters of the license (see *Figure 2-20*).



Figure 2-20. STEP 3 Window

- 9 Click **Confirm** to generate the license. The *STEP 4* window shown in *Figure 2-21* now appears.



Figure 2-21. STEP 4 Window

10 After the license is generated, there are two ways to transfer this file to your PC: saving or email.

- Click the **Save to File** button to browse the directory structure on your PC. After selecting a location, rename the file according to your preference, using a .lic extension.
- Click the **Email** button to send the license key text to your email address. You can then copy this text into a license file on a directory on your PC.

A example license file name is *license_2005031750821.lic*. You can rename this file using Microsoft file naming parameters. It is recommended that the file name contain the chassis controller serial number for easy identification. This provides an easy way for you to manage licenses and to inventory the components of your Spirent TestCenter system.

11 Click the **View** button to see the parameters of the license that you generated.

12 Now that you have your license key file, you need to load it onto your Spirent TestCenter chassis controller. This will enable you to use your new Spirent TestCenter hardware and test applications.



To copy a license key file to a chassis controller:

- 1** Open the Spirent TestCenter Administration application on your PC. (This application was installed in “*Procedure 3: Install Spirent TestCenter Software*” on page 34.)
- 2** Click the **Licensing** tab.
- 3** Click the **Help** button to launch the Administration online Help.
- 4** Follow the instructions in the online Help to download your license key file first to the Administration application and then to a chassis controller.

Procedure 10: Connect to a DUT/SUT

Connecting to a DUT (device under test) or SUT (system under test) involves two main procedures:

- Connecting your chassis to a PC or network
- Connecting the Spirent TestCenter test modules to the DUT/SUT

Connecting your Chassis to a PC or Network

To connect your Spirent TestCenter chassis either to your PC or to the network to which your PC is connected, use the chassis' Ethernet port labeled ETHERNET INTERFACE (RJ-45) located on the chassis' back panel.

Connect the chassis to the desired device(s) or network to be tested via either of the methods shown in *Figure 2-22* or *Figure 2-23*.

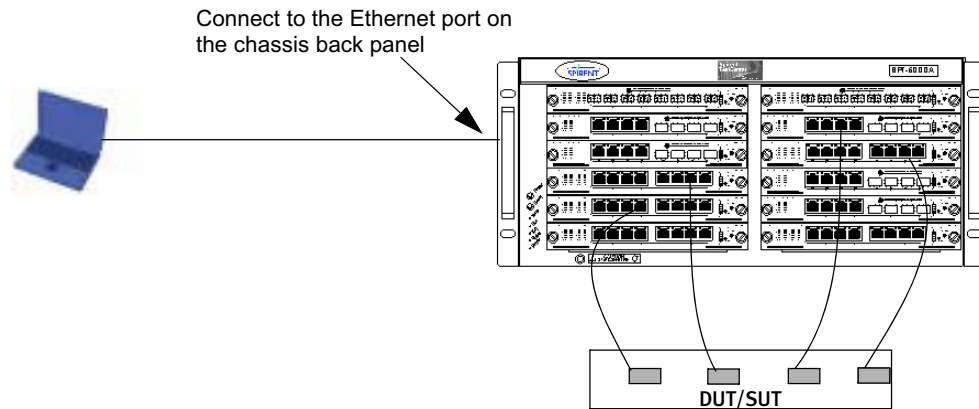


Figure 2-22. Connecting the PC Directly to the Chassis and to the DUT/SUT

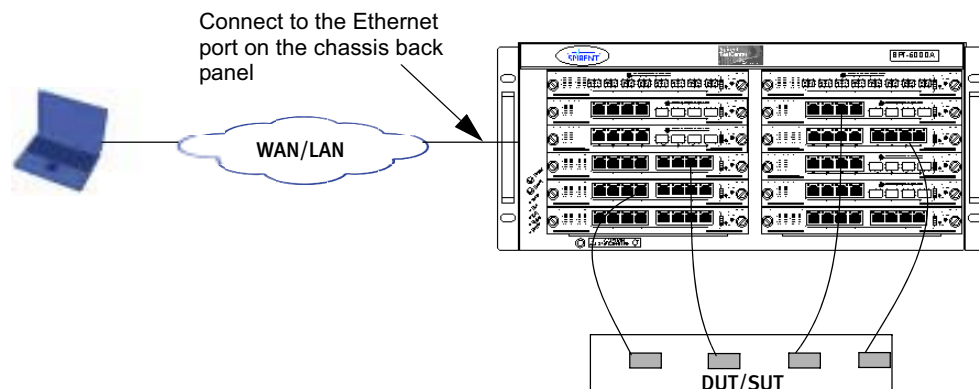


Figure 2-23. Connecting the PC via a WAN/LAN to the Chassis and to the DUT/SUT